

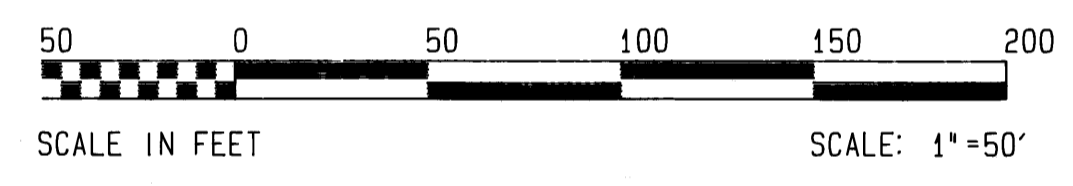
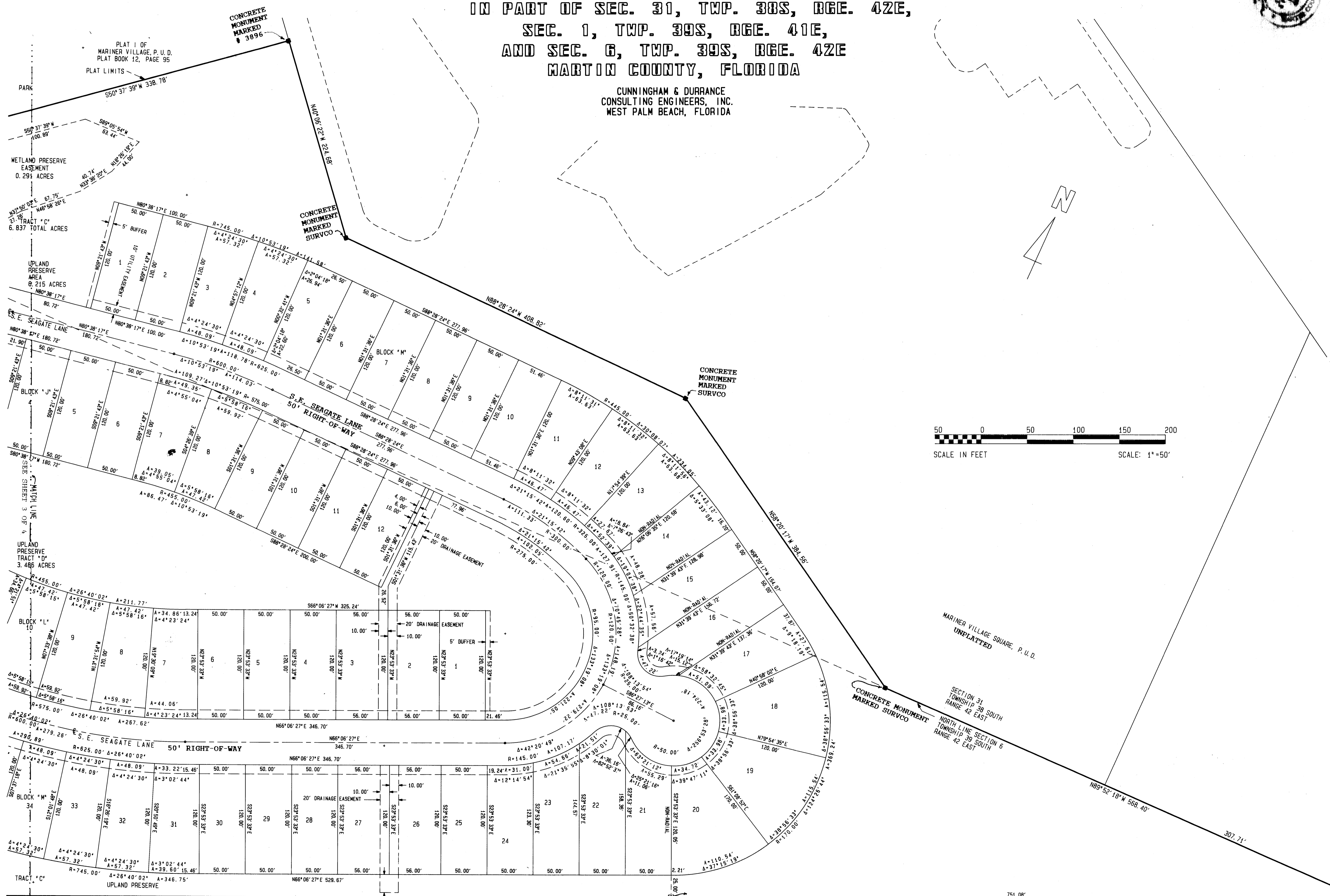
# PLAT II OF MARINER VILLAGE, P. U. D. (R)

IN PART OF SEC. 31, TWP. 30S, RGE. 42E,  
SEC. 1, TWP. 30S, RGE. 41E,  
AND SEC. 6, TWP. 30S, RGE. 42E  
MARTIN COUNTY, FLORIDA



I, MARINA STILLER, CLERK OF THE CIRCUIT COURT OF MARTIN COUNTY, FLORIDA, HEREBY CERTIFY THAT THIS PLAT WAS FILED FOR RECORD IN PLAT BOOK 13, PAGE 39, MARTIN COUNTY, FLORIDA PUBLIC RECORDS, THIS 22<sup>ND</sup> DAY OF SEPTEMBER, 2003.  
MARINA STILLER, CLERK  
CIRCUIT COURT  
MARTIN COUNTY, FLORIDA  
BY: *Deborah Langston*  
DEPUTY CLERK  
FILE NUMBER: 102-1855

CUNNINGHAM & DURRANCE  
CONSULTING ENGINEERS, INC.  
WEST PALM BEACH, FLORIDA



NORTH LINE OF GOMEZ GRANT AS RECORDED IN PLAT BOOK 1, PAGE 80 OF THE PUBLIC RECORDS OF PALM BEACH COUNTY, NOW MARTIN COUNTY.  
\* THE PRESERVE PLAT NO. 1 AS RECORDED IN PLAT BOOK 11, PAGE 76 OF THE PUBLIC RECORDS OF MARTIN COUNTY.

CONCRETE MONUMENT MARKED SURVCO